

SAOL NUA

A NEW WAY OF LIFE

THE SOCIAL AND ECONOMIC PROGRAMME OF SINN FÉIN POBLACHTACH

PRAGHAS 70P

The Real Alternative

A new vision of Ireland

ÉIRE NUA – A New Democracy is the title of the SINN FÉIN Poblachtach Programme for a New Federal Ireland which would provide for four Provincial Parliaments and the maximum measure of local participatory democracy.

This structure would replace the two states created in Ireland in 1922 as part of the English 'settlement of the Irish problem'. ÉIRE NUA would ensure that every citizen of Ireland could participate in a new and genuine democracy.

New structures in a free Ireland would not of themselves bring about a just social and economic order, but they would make it possible to introduce progressive policies which would lead to the social, cultural and economic emancipation of all the Irish people.

Any realistic assessment of the results of partition government in Ireland will show that the arrangement has been a failure. The failure of the Six-County state is perhaps more obvious and certainly more widely acknowledged. The 26-County state has also been a failure, insofar as it has manifestly failed to provide a living, in decent comfort, for all its citizens.

Sinn Féin Poblachtach sees conventional economics as an unsustainable discipline which must be subordinated to social, environmental, ethical and spiritual values.

The system of colonial capitalism, which decimated the Irish population under the Act of Union of 1800, still operates in Ireland. One out of every two persons born here since 1922 has been forced to emigrate. One third of those who remain live in a totally unacceptable state of poverty, as defined by West European standards.

In recent times, 20% of the workforce in the 26 Counties and 15% in the Six Counties is registered as unemployed. The gap

between rich and poor continues to widen and the social consequences of this alienation and degradation are tangible and widespread.

Membership of the EC since 1973 has served to accelerate the forces of transnational capitalism which leave Ireland in such a debilitated condition. The new closer political union envisaged for the EC will result in the Irish people having even less control of their own affairs and we shall be treated as a mere 'region' by the economic planners who serve the interests of big business and the transnational companies.

The collapse of the Soviet system in Eastern Europe does not at all signal the triumph of capitalism or market economics. Both systems have been centralising, impersonal, unecological and unethical. They have been disabling for millions of people, by making them dependent and they have been destructive of the earth and its resources. The high-consumption, high-pollution lifestyles of the rich countries are based on the exploitation of the poorer nations and are now also hopelessly unsustainable.



Ruairi Ó Brádaigh, Uachtarán, SINN FÉIN Poblachtach, ag labhairt ag an Ard-Fheis a sheol SAOL NUA.

Free-rein transnational capitalism is a denial of true democracy, is outside of any democratic control, is predatory and dehumanising, and has not served the interests of the majority of people. The pursuit of endless economic 'growth', ever more centralised and undemocratic, as within the EC, must be replaced by a completely new decentralised and humane system.

SINN FÉIN Poblachtach sees conventional economics as an unsustainable discipline which must be subordinated to social, environmental, ethical and spiritual values.

Decentralised and humane system

We need a new system of economics which would put human beings and human development before the interests of finance and maximisation of profits. Major changes are now needed in order to promote the true long-term interests of people and social justice. We need to create a new vision of the Ireland we want, lay our plans accordingly and give our people a sense of direction and purpose.

It is apposite to recall here the prophetic words of the Irish patriot, James Connolly:

'If you remove the English army tomorrow and hoist the green flag over Dublin Castle unless you set about the organisation of the Socialist Republic your efforts would be in vain.'

'England would still rule you through her capitalists, through her

landlords, through her financiers, through the whole array of commercial and individualist institutions she has planted in this country and watered with the tears of our mothers and the blood of our martyrs.

'England would still rule you to your ruin, even while your lips offered hypocritical homage at the shrine of that Freedom whose cause you had betrayed.'

James Connolly and Patrick Pearse died but the system they sought to change continues in existence to this very day. This system has forced 2,000,000 Irish people to emigrate since 1916.

Here in this document Sinn Féin Poblachtach seeks to outline the principal elements of its Social and Economic Programme. We are of a firm belief that a continuation of the present system, whether on the basis of the partition arrangement or in some form of united Ireland, within or without the EC, cannot bring about the human, social and economic development which would promote freedom, equality, justice and the happiness of each community and each individual person in it.

Centuries of colonialism and decades of high emigration and unemployment have produced a psychology of defeatism in Ireland. To accept these problems as inevitable is to lower our standards of national achievement. The politicians who advocate closer integration into the EC see this body as a mere mechanism of escape from their own ineptitude and failures.

Something new, based on a set of human values and on policies designed to promote these values, is needed. These values and policies are outlined below, and indicate the road to a new society in Ireland – **Saol Nua**.

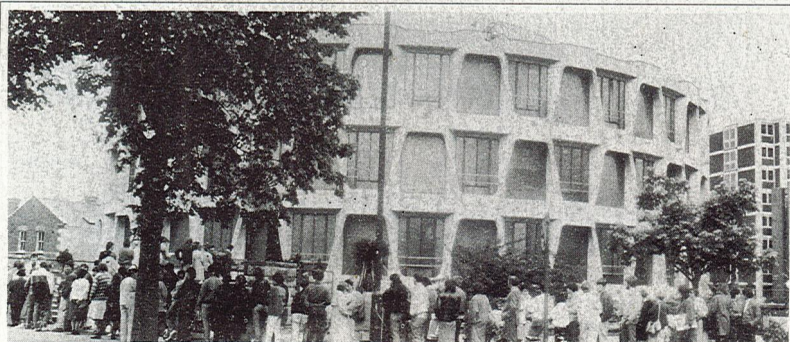
TEIP

Tá teipthe ar dhá stát na críochdheighilte. Aithnítear go forleathan cliseadh follasach na Sé Chontae atá fós faoi riail Shasana.

Theip ar stát na 26 Chontae freisin, ón gcéad lá agus le 70 bliain, saol faoi chompord a sholáthar dá shaoránaigh.

Tá duine as gach cúigear difhostaithe, duine as gach triúr ag brath ar an leas sóisialta, agus imíonn duine as gach beirt a shaolaítear anseo ar deoraíocht.

Queuing at the US Embassy in Dublin. (The politicians' answer to the unemployment problem is to ask the US authorities for more visas.)



NA BUN-LUACHANNA

The basic values of a New Society in Ireland

Power to the people

- A concern for people, their welfare, wellbeing and happiness and a desire to cherish all the children of the nation equally. Every person is entitled to have his or her inherent human dignity respected and every citizen should be able to enjoy freedom from poverty or insecurity and to have access to a fair and adequate share of the nation's wealth. All citizens should be equal before the law and all have the duty and the right to contribute by work to their own welfare and the welfare of society. We guarantee equality to all citizens regardless of race, colour, religion, ethnic or national origins, sexual orientation or gender.
- A sense of the **importance of pluralism** in Ireland, and respect for the different traditions within the nation and a guarantee of freedom of expression, religion and philosophical opinion. We are committed to complete separation of church and state.
- A recognition that human dignity requires the **promotion of self-reliance** in individuals, families and communities, on the basis of social justice. This involves reducing the extent to which so many people have been made dependent on the state, employers or financial operators.
- A belief in a social and economic system which would develop the capability of people to take

greater control of their lives. People have a right to shape the decisions which affect them. Both economics and technology should not be regarded as value-free, but should serve people by enabling them to become more productive and lead more satisfying and fulfilling lives. Over-emphasis on material 'needs' or wants has led to many social problems, greed and corruption.

- A conviction that a **fuller participatory democracy** should replace the inadequate and abused system of representative democracy. This democracy would include economic democracy. Local worker/producer-owned cooperatives and community enterprises would be encouraged and developed. Local economic autonomy and self-sufficiency would be promoted and people would be encouraged to organise themselves and run their own affairs without recourse to the big cities or politicians.
- A desire to see the nation organised as a **community of communities**, with Liberty, Equality and Justice for all citizens, and an approach to economic life and thought which would include qualitative values and ethical choice.
- An understanding that most of the earth's **resources** are finite and that they must be used in a manner which is **non-wasteful and sustainable**. This means that waste and pollution are to be avoided and the environment protected and that resources should be available to all, including future generations.
- A belief in the value of **cultural and national identity** and the need to conserve, promote and develop the Irish language as the distinctive central core of that Irish identity. This will change the present cultural dependency on England and the United States.
- A realisation of the need for a **comprehensive system of education** for all children and continuing education for adults. The quality of people's lives depends greatly on their education, which, for the young should be child-centred and for adults should be community-

LUACHANNA DAONNA

Sar a ndéanfaimid córas nua a rianadh ní foláir dúinn, i dtosach báire, na bun-luachanna ar a mbeadh an córas sin bunaithe a bhreacadh síos. Is luachanna daonna iad seo agus ní foláir don pholasat sóisialta agus eacnamaíochta comhfhreagairt do na luachanna seo.

centred, with an appropriate balance between academic and technical education, and a commitment at all times to equity for women within the education system.

- A firm conviction of the necessity of **national sovereignty** and of the right to strive to achieve and uphold this sovereignty. Democracy can best function in a meaningful way at local and national levels. Within the national community there is sufficient solidarity, mutual identification and mutuality of interest among people to induce minorities to agree freely to majority rule. Thus there is a shared citizenship, allegiance to a common government and a willingness to finance that government's tax and income transfer system. The solidarities which exist within nations do not exist between them. Multinational federations are unstable, artificial and repressive entities. Such federations like the USSR and Yugoslavia have come apart in recent times and many

nation-states have come into existence. It behoves all Democrats and Socialists to work to defend the nation-states from transnational capital.

The Republican and Democratic aims and principles of the 1916 Proclamation and of the First Dáil Éireann, 1919 inspire and guide us in our efforts to bring a lasting peace with justice to all the Irish people.

- A sense that we all have a common identity as human beings, as members of the great family of peoples. We wish to play our role in this wider world community as **internationalists**, on the basis of equality and respect for the rights of others. In particular, we would wish to eliminate the kinds of international trade and international debt that impoverish the peoples of the Third World. We advocate neutrality in respect to military alliances and power blocs and we feel a sense of solidarity with all peoples who are struggling for freedom and justice.
- **Truth, honesty, and justice** should be the hallmarks of all our endeavours.

PASS IT ON

When you have read SAOL NUA do not throw it out. Pass it on to a friend. It is the only real alternative.

ORIGIN OF SAOL NUA

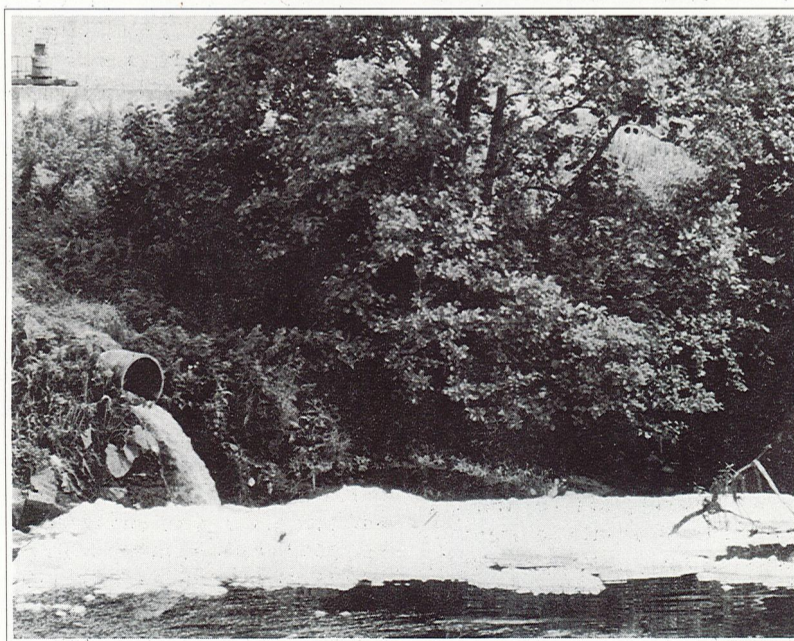
The November, 1991 Ard-Fheis of SINN FÉIN Poblachtach instructed the incoming Ard-Chomhairle to develop a new Social and Economic Programme for the organisation.

The Ard-Chomhairle, at meetings early in 1992 drafted Saol Nua and in July sent it to all Cumainn.

The November, 1992 Ard-Fheis adopted the Programme, with some amendments.

Saol Nua - a new way of life, represents a vision of Ireland based on Republican, Socialist, Self-reliance and Ecological principles.

The basic values are the foundation on which Saol Nua is built.



GNP figures do not give any measure of the damage done by pollution to the environment and the quality of life. Here we see raw sewage and effluent being discharged into water.

POLASÁI FADTÉARMACH

LONG-TERM POLICY

People come first

The welfare and wellbeing of all, meeting the real needs of human nature ... not merely satisfying the wants created by the consumer society.

It is a fundamental conviction of Sinn Féin Poblachtach that people come first, that all Social and Economic policy should serve the interests of people. We know that in Ireland today vast fortunes are made and enjoyed by a small, select class of people, mainly from the ranks of politicians, (with their numerous expenses, pensions, etc), financiers, business people, property developers and media gurus. This 'state class' is part of an international set which directs, operates or facilitates capital, both Irish and transnational. Their interests prevail over those of the ordinary people.

Meanwhile, the rural economy is collapsing, there is a rising tide of unemployment in both town and country which in turn produces grave social problems and personal misery for thousands of individuals and families. Emigration on a vast scale has provided the safety-valve which lets the politicians off the hook on this national scandal.

To work is a natural thing for people. Every person is entitled to an opportunity to use his or her talent in meaningful, satisfying and productive work. A lot of lip-service is paid to the importance of our human resources. Yet, what is more uneconomic than having vast numbers of people doing nothing?

The output of an idle person is nil, and grave damage is done to the self-esteem of those who are deprived of an opportunity to look after themselves, because they are made to feel useless.

Every person is entitled to an opportunity to use his or her talent in meaningful, satisfying and productive work ... Yet, what is more uneconomic than having vast numbers of people doing nothing?

It is surely not beyond the ingenuity of people to organise society in a way which provides for the welfare and wellbeing of all. Provision of work opportunities should be a primary objective of any radical programme, and radical steps are necessary. One fundamental of such a programme

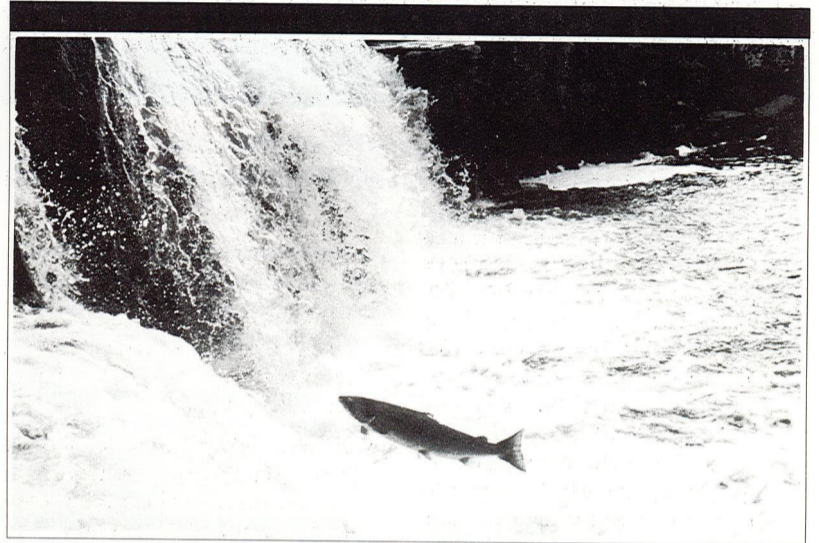
is that there should be a discernible shift of emphasis. We need to develop a lifestyle which puts material things in their proper place, which is secondary, not primary. Such a lifestyle would give first place to the real needs of human nature and would be compatible with the living nature around us and with the finite resources of the earth.

The UN Development Programme Report for 1990 concluded that 'the link between economic growth and human progress is not automatic'

The 'haves' may well be a greater problem than the 'have nots', because in the lifestyle of the acquisitive consumer society they move from one material 'fix' to the next, the video recorder, the second automobile, the second holiday, the yacht etc. Meanwhile, those who have nothing to sell but their labour are in the weakest position of all, marginalised to the fringes of society, with many of them condemned to long-term unemployment. The escalating crime rate is one of the inevitable social problems which result from this national scandal.

Those who operate this system have devised measures of economic success which are quantitative rather than qualitative. This explains how Ireland can have economic 'growth' and rising unemployment at the same time. It is refreshing to note that the UN Development Programme Report for 1990 concluded that 'the link between economic growth and human progress is not automatic'.

In ÉIRE NUA we commented that those who operate the partition system of government in Ireland are hardly likely to change it and that they have now become themselves part of the problem. We can now add that in the social and economic spheres those who pursue careers and survival in politics, finance, administration and business are prisoners of the power structure of today and are most unlikely to have the courage to face the reality that the system they operate is a failure.



'She is a rich and rare land, this native land of mine'. - Thomas Davis's verse reminds us that Ireland's natural resources surpass those of several other small European countries. Iceland, for instance, is relatively remote from neighbours and markets and her climate is hardly better than ours. Her wealth is in her sea fisheries. She declared and maintained a 200 mile territorial limit and with only four gunboats took on the English fishing fleet and the Royal Navy and won the "Cod War" of the 1970s.

The EC Common Fishery Policy prevents Ireland from developing her sea fisheries. The 26-County state has 16% of EC waters within its 200-mile limit, is allowed a quota of only 9% and catches less than 5% of the total EC catch. Meanwhile, the EC is insisting that we reduce our fleet size.

Only Sinn Féin Poblachtach, which has consistently advocated a radical approach, and other citizens of independent minds are free to propose and promote an alternative.

Much of the criticism which we have levelled at the capitalist system applies to other countries also. But we in Ireland, because of our long experience of capitalist colonialism, have suffered in a particularly acute way. Further 'fixes' by way of giving more power to the EC technocrats will bring a change from dependency on London to dependency on Brussels and will not solve our problems. Indeed, it will accelerate the very forces which have brought us to the wretched condition in which we are today. A new radical approach is needed, based on a different set of values and criteria.

We are not unaware that there is grave disquiet in other countries

COMHAR NA GCOMHARSAN

Is sampla é Comhar na gComharsan den chineál forbartha atá bunaithe ar an bpobal, agus gach oibrí i seilbh aonaid táirgeachta.

Is rud dúchasach é seo, ach baineann sé le dáonnúlacht idirnáisiúnta freisin.

Tá dínit agus féinmheas agus sásamh ag baint leis an gcóras seo. Tá smacht ag an saoránach ar a s(h)aoil féin agus tá seans ag gach duine a (h)éirim a úsáid in obair atá lán de bhri agus de shásamh, agus atá táirgiúil san am céanna.

also, both developed and developing, arising especially from the terrible waste of resources, pollution of the atmosphere, chemical farming and the dehumanising results of high technology. Many people are coming to realise that the survival of the human race and the planet itself is being put in jeopardy.

... those who pursue careers and survival in politics, finance, administration and business are prisoners of the power structure of today and are most unlikely to have the courage to face the reality that the system they operate is a failure.

The Constitution of Sinn Féin Poblachtach declares that we seek to create a Federal Democratic Socialist Republic in Ireland. The democratic structures outlined in ÉIRE NUA would be supplemented by a social and economic system which would seek to make it possible for every citizen to own an economic unit of production. It is only in small, distinct and comprehensible groups that people can be themselves and achieve self-esteem, dignity and fulfilment. The Irish Comhar na gComharsan is an example of the kind of local or community development in which each worker owns a unit of production.

POLASÁÍ FAD-TÉARMACH

The Essential Elements

Each district, region and province as self-sufficient as possible

SINN FÉIN Poblachtach considers that the following are essential elements of the Democratic Socialist system which we propose:

The unresolved **national question** is a running sore which constitutes an obstacle to the achievement of peace with justice in Ireland. This issue must be confronted and resolved as a matter of urgency. See **ÉIRE NUA – A New Democracy and Towards a Peaceful Ireland.**

Finance, Banking and all key industries must be brought under public, democratic or social control, and the scope and extent of local community banking, like the Credit Unions, should be extended, so as to serve the needs of local people. Social control of capital is essential, to ensure that capital serves people, rather than people being the slaves of capital; to achieve wider capital ownership; to promote balanced development and an equitable distribution of wealth. Money must be regarded, not as a commodity, but as an accounting system in which all participate.

The enormous **politicians' debt**, known as the 'national debt' was accumulated by the politicians to finance a succession of 'fixes' and keep the electorate on their side. Borrowing massive sums in order to live on an overdraft was an act of national treachery. Sinn Féin Poblachtach does not consider that the Irish people are morally accountable for repaying this debt. Serious consideration should be given to writing off this millstone around the necks of the Irish people. At the very least, a moratorium should be declared and the debt rescheduled.

Economic development requires motivation, know-how, capital, outlets and markets

Ireland is a country which possesses many **natural resources**, land, fisheries, minerals, climate, etc. These must be developed in a sustainable, non-polluting manner. Economic development requires motivation, know-how, capital, outlets and markets.

There is a demand at home and markets abroad for natural food with taste. Ireland is ideally positioned to take advantage of this and a whole new agrarian reform, based on both private farms and cooperatives, particularly organic farming, could

be based on such a development with many new jobs being created in production, processing and distribution.

Since one of our basic values is to enable people to look after themselves, to be self-reliant, and communities to be as self-sufficient as possible, Sinn Féin Poblachtach would plan for considerable investment in **intermediate technology**, as being particularly suited to Ireland's needs. Modern high technology serves an efficient system of production and consumption, and in this system labour is just a factor of production. Furthermore, high technology is generally capital-intensive, energy-intensive, adding to urban congestion and pollution and maximising waste. It dehumanises work, creates dependency on a large scale and alienates people because it diminishes their power

to influence their economic and social environment. Indeed, this technology seeks more and more to achieve production without people at all.

Many of the high-technology enterprises are multinational companies which are the modern equivalent of the absentee landlords, and the modern clearances are ordered from boardrooms in distant lands. The high-exporting multinational corporations which have located in Ireland are neo-colonial in nature. They have not integrated with the rest of the economy and send up to 80% of their profits abroad.

Social control of capital is essential, to ensure that capital serves people, rather than people being the slaves of capital.

Alternative structures and alternative technologies are needed which will enable people to control their own work, conserve resources and protect the environment. Such alternatives are generally small or medium in scale, decentralised, relatively cheap so as to be generally accessible and compatible with people's need for creativity. Their social benefits are considerable. Local small-scale enterprise will also provide more work than centralised automated industry.

CÓRAS NUA MARTHANACH

Léirítear anseo na príomhphointí i bpolasáí fadtéarmach sóisialta agus eacnamaíochta SINN FÉIN Poblachtach.

Tuigfidh an léitheoir gur athrú bunúsach é seo ón gcóras mí-chlúiteach nach ndearna ach an saibhir a dhéanamh níos saibhre agus an daibhir níos daibhre.

Córas nua marthanach atá á mholadh anseo chun freastal ar fhíor-riachtanais nádúrtha an duine, gach uile dhuine ar domhan, in áit bheith ag iarraidh bréagtheastálacha na sochaí cnuasaithí a shásamh.

We are not alone in advocating such a change in direction, as many thinkers, both in Europe and further afield are coming to the conclusion that this is the essential step which is necessary to reverse rural decay and mounting unemployment.

This is not a return to the last century or even to the 1930s, but a policy for a positive development of technology such as has already been achieved with success in other countries including communities in the US and Canada. The modern personal computer is an example of advanced, inexpensive equipment for small-scale productive work. Similar material is available for food growing and processing, textiles, and a wide range of maintenance work and in many other areas of work.

The industrial revolution took work out of the home workshop into the factory and town; intermediate and alternative technology can bring much of it back again, and give people back their dignity.

The economic and social development model we propose would make each district, region and province in Ireland as self-sufficient as possible. The countryside, towns and villages and the city communities would be revitalised and each area would have its own network of industries and services.

It will be necessary to design **new measures of economic success**, because the terms 'economic growth', 'GNP' and 'standard of living' are now inadequate as indicators of economic wellbeing. They ignore, for example, the contribution of voluntary workers, and of thousands of mothers and men and women who choose to work in the home, all of whom make a substantial contribution to the economy,



People are concerned
A section of the large attendance at a meeting of **DEVELOPING THE WEST TOGETHER** in Tuam, Co. Galway. (Photo courtesy of Tuam Herald.)

GNÍOMHAÍOCHT LÁITHREACH

A Programme of immediate action

SINN FÉIN Poblachtach is aware that it is a long way from achieving its objectives, yet it feels it has a duty to outline an alternative to the present failed patchwork system.

In order to organise the Irish people in a demand for a new deal SINN FÉIN Poblachtach will involve itself forthwith in a programme of action at the very points where the existing system operates most severely to the detriment of the community.

These issues will include:

Opposing EC/EPU/EMU proposals which conflict with the interests of the Irish people.

Organising against repression, extradition and Section 31 of the Broadcasting Act, as well as restrictions on the broadcasting media in the Six Counties.

Contesting 26-County local elections.

Involving ourselves in local and community issues.

Supporting local autonomy, including local financing.

Encouraging and promoting cooperative enterprises.

Working to protect the environment and encouraging the recycling of waste.

Informing the people, young people and the unemployed in particular, about our alternative to the existing system.

Developing and promoting our monthly publication, SAOIRSE.

Supporting consumer rights and exposing the politicians' system of clientelism.

Campaigning against unfair banking practices.

Supporting the campaign for a television service in Irish.

Supporting a housing campaign and working against evictions.

Working for and among the unemployed and emigrants.

Advocating, in order to alleviate the unemployment crisis, the concept of voluntary retirement for PAYE workers on a pension scale that would allow them to live in dignity. This could be achieved by

TREOIR

Is iad na daoine is mó atá thíos leis an gcóras atá ann faoi láthair is fearr a thuigeann na lochtanna atá air. Ní mór do SINN FÉIN Poblachtach easpaí an chórais a mhíniú agus córas nua, SAOL NUA, a mholadh ina áit.

Rachfar i mbun gníomhaíochta chun an ceannas agus an treoír seo a thabhairt, ainneoin na laicisí cumarsáide atá orainn.

Mar a léiríonn an sliocht ó pheann Fritz Schumacher, tá intinní aireacha, géara, soilíosacha ag teacht linn sna cúrsaí seo, nó muidne ag teacht leo-siúd!

Aníos as ár dtaithí féin a thugamar na tuairimí seo linn, mar thoradh machnaimh ar ghéabh agus ar chruatan na muintire.

a properly funded state pension. The retirement age should be reduced by one year for each of the next ten years.

Involving ourselves in Trade Union activity in support of workers' rights and seeking to interest organised labour in our alternative programme.

Republican SINN FÉIN Poblachtach

SINN FÉIN, founded in 1905, has been a Republican organisation since 1917.

Republican SINN FÉIN Poblachtach should not be confused with another grouping which broke the SINN FÉIN Constitution in 1986 and which persists in calling itself SINN FÉIN without authorisation.

THE UNRESOLVED NATIONAL QUESTION • IRISH SOVEREIGNTY • PARTITION • ENGLISH RULE • LOCAL DEMOCRACY

ÉIRE NUA – A New Democracy – the SINN FÉIN Programme for a Four-Province Federal Ireland, with completely new governmental structures; illustrated with maps and a cover design by Robert Ballagh.

Towards a Peaceful Ireland – statement from SINN FÉIN Poblachtach on how to move forward from the unhappy position

we are now in and achieve the New Democracy, with equal rights and opportunities for all Irish men and women.

If you wish to read these documents write to:

Publicity Dept.,
SINN FÉIN Poblachtach,
41 Arran Quay,
Dublin 7.

and enclose £1.50 to cover cost and postage.

“ *Economic development is something much wider and deeper than economics, let alone econometrics. Its roots lie outside the economic sphere, in education, organisation, discipline, and, beyond that, in political independence and a national consciousness of self-reliance. It cannot be 'produced' by skilful grafting operations carried out by foreign technicians or an indigenous elite that has lost contact with the ordinary people. It can succeed only if it is carried forward as a broad, popular 'movement of reconstruction' with primary emphasis on the full utilisation of the drive, enthusiasm, intelligence, and labour power of everyone. Success cannot be obtained by some form of magic produced by scientists, technicians, or economic planners. It can come only through a process of growth involving the education, organisation, and discipline of the whole population. Anything less than this must end in failure.* ”

'What is the meaning of democracy, freedom, human

dignity, standard of living, self-reliance, fulfilment? Is it a matter of goods, or of people? Of course it is a matter of people. But people can be themselves only in small comprehensible groups. Therefore we must learn to think in terms of an articulated structure that can cope with a multiplicity of small-scale units. If economic thinking cannot grasp this it is useless. If it cannot get beyond its vast abstractions, the national income, the rate of growth, capital/output ratio, input/output analysis, labour mobility, capital accumulation; if it cannot get beyond all this and make contact with the human realities of poverty, frustration, alienation, despair, breakdown, crime, escapism, stress, congestion, ugliness, and spiritual death, then let us scrap economics and start afresh.

Are there not indeed enough 'signs of the times' to indicate that a new start is needed? ”

– E.F. Schumacher in
SMALL IS BEAUTIFUL

Dr E.F. Schumacher, economist and journalist was born in Germany, lived in many countries, studied in Oxford and taught in Columbia University, New York. He is well-known for his appraisal of western economic attitudes, clearly expressed in his best-selling book *Small is Beautiful*. This was first published in 1973 and has since been reprinted 31 times. He died in 1977.

Fritz Schumacher was greatly interested in the developing third world countries but declared that the developed countries also had major problems. He saw modern society as greedy, inefficient, inhumane and unecological, and he called for a complete reorientation of values.

He saw a looming crisis of oil shortages, environmental destruction, dehumanised organisation of life and work and growing unemployment, all resulting in alienation and massive social

problems. He, more than any other person, launched the idea of an intermediate technology.

'Modern technology,' he said, 'has become increasingly violent. Violence is not just a matter of one person hitting another person over the head, it is employing violent means. We have this in agriculture, where we scatter around very violent chemicals, we call them pesticides, which means killer substances.'

He advocated the creation of life-styles and technologies on a human scale which are low-cost, sparing in their use of resources, non-violent towards nature, and, therefore, sustainable.

There are Intermediate Technology groups and Schumacher Societies in many countries today, promoting this man's ideas. Their emphasis is in smaller working units, communal ownership and regional workplaces utilising local labour and resources. As the man himself said: 'We need economics as if people mattered.'